

Dress for Success

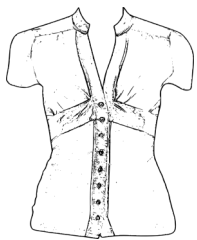


Look professional - first impressions count.

SUIT: Wear a conservative suit or dress in black, navy, or dark gray. Skirt length should fall just at the knee. Pants should be hemmed to skim the top of your shoes.



SUIT: A conservative, two-piece suit in black, navy, or dark gray is appropriate. Khakis, if business casual is called for.



SHIRT: Pair your suit with a white or light colored blouse, a nice sweater, or a shell.

SHIRT: Pair it with a long-sleeved white or light blue tailored shirt.



HOSIERY & SHOES: Hosiery should be in plain or neutral. Shoes should be a closed-toe pump or low-heeled shoe that matched your suit.



TIE: Choose a conservative tie. Look for something with stripes of a small pattern.

SHOES: Wear polished dress shoes, dark socks, and a belt to match your shoes.

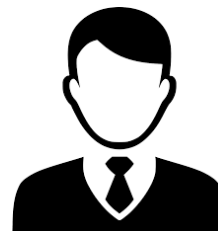


ACCESSORIES: Wear a minimum amount of jewelry; small earrings, a watch, and a ring.

ACCESSORIES: Wear a minimum amount of jewelry; a watch and a ring.



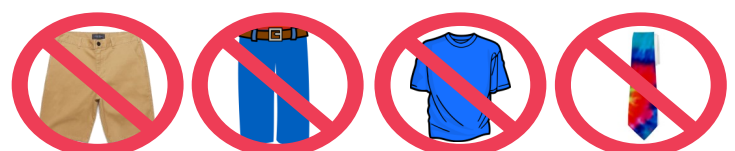
GROOMING: Have a well-groomed hairstyle and wear minimal and natural-looking makeup. Your fingernails should be clean. Wear a light polish or no polish.



GROOMING: Have a well-groomed hairstyle and clean fingernails.



WHAT NOT TO WEAR: Short skirts, shorts, see-through or low-cut shirts, sandals, clanking or large jewelry.



WHAT NOT TO WEAR: Shorts, jeans, t-shirt, wild tie.